



innovative • architectural • design



2023/2024



"At Hub Architects, we love what we do and it shows."

Our designs are driven by a true passion for the process of architecture and by a hands-on engagement with all opportunities presented in the modern building industry.

Core Values:

**CONSISTENCY**  
**EXCELLENCE**  
**INNOVATION**  
**INTEGRITY**  
**PASSION**

## A word from the Director

Hub Architects is founded on an unwavering commitment to design excellence, particularly evident in our proficiency with large-scale, intricate residential projects. We distinguish ourselves by cultivating rigorous design and collaborative partnerships with building environment practitioners and industry specialists.

Through design leadership, we strive to construct a narrative that yields meaningful solutions in the built environment. Drawing from over 20 years of excellence in residential design, our specialised knowledge provides valuable insights into the successful delivery of complex projects.

Our dedicated services encompasses master planning, residential estates, educational facilities, and residential mixed-use projects. At the heart of our ethos is the creation of architectural experiences that contributes to an elevated lifestyle for all.

We find joy in the process of designing environments that enhance your well-being. Our commitment extends beyond design to a genuine enthusiasm for the success of our collaborators, including developers, builders, property portfolio managers, property owners, organisations, and initiatives with whom we engage.

"Above all else the architectural experience for the end user should leave a lasting impression".

Jean-Paul Zietsman  
Director of Hub Architects Pty Ltd



# Hub Architects Narrative



Hub Architects was formed in 2003 with the purchase of the 16 year-old business of 'Architectural Concepts' and integrated alongside Paragon Architects as a separately owned company with new shareholders.



In 2014 a deal was structured that allowed Hub Architects to exit the Paragon Group and focus on maintaining its speciality in residential architecture as a standalone brand.



In 2023 an opportunity was presented for the creation of Hub Architects South Africa. This is a B-BBEE level 2 company.

From 2008 Hub Architects focused on residential design, master planning and mixed use residential design within the Paragon Group. 2012 saw Hub Architects re-branded to Paragon Hub Architects to bring it closer to the Paragon Group Brand.

**PARAGON HUB**



# Hub Architects Narrative

## WHO WE ARE

We are an architectural practice that has been established for over 20 years. We excel at large scale complex projects of a residential nature that require rigorous design and partnering relationships with all building environment practitioners and industry specialists.

## WHAT WE DO

We are an experienced design orientated architectural practice offering specialist services in master planning, residential estates, contract, documentation architectural design, educational facilities and residential mixed use projects.



Offices are Fully Computerized



INVOLVED IN OVER 165 ARCHITECTURAL PROJECTS



## PROGRAMS



Over 6 215 Apartments have been constructed and are occupied.  
Hub Architects apartments cover a total site area of over 87 6340m<sup>2</sup>.

## CLIENT ACHIEVED DEVELOPMENT AWARDS



**Orchid Ridge**  
Year: 2018 - 2019  
Category: Residential development SA

**Emerald Skye**  
Year: 2019 - 2020  
Category: Residential development A3

**The Aura**  
Year: 2021 - 2022  
Best residential development SA

2021-2022





## Completed Works

- Rietvalleirand
- Urban Tana
- Saintsbury Corner
- Waterfall Luxury House
- The Aura
- East on 82
- Crowthorne Corner
- Lombardy Meander
- Canvas 82
- Orchid Ridge
- Midview Gardens
- Sparks School
- The Parks
- The Oval Luxury Apartments
- Carlswald Luxury Apartments
- Umthunzi Garden Apartments
- Birchwood Village
- Elawini Lifestyle Estate
- Ports Edge Conversion
- The View Apartments
- Zaleni Apartments
- 17 on Forest
- Stonewood Estate
- Sibiti Private Estate
- 21 Zambezi Estate
- Lone Hill Village
- Tinza Lifestyle Estate
- The Crest Apartments



# Rietvalleirand

This low density site is laid out to accommodate the natural slope of the site. The buildings have been orientated north to maximize solar gains while also incorporating the great views of Tshwane.

 Architectural Style: Modern Contemporary

 Rietvalleirand, Tshwane

 Site Area: 41 421m<sup>2</sup>

 Density : 30 Units per Hectare

 124Units

 Completed in 2024



# Urban Tana

The design intent was to create facades that express a modern aesthetic but retain a simplistic box like language that is understandable and easy on the eye.

 Architectural Style: Modern

 Sunninghill, Johannesburg

 Site Area: 21 700m<sup>2</sup>

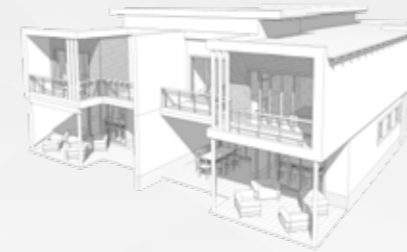
 Density : 35 Units per Hectare

 62 Units

 Completed in 2023



hub  
ARCHITECTS



innovative . architectural . design



hub  
ARCHITECTS





# Saintsbury Corner

This high-density development is situated on a brownfield site. The development is orientated around a central green space and parking lot to maximise the units exposure to the north sun.

-  Architectural Style: Modern
-  Ferndale, Johannesburg
-  Site Area: 8 030m<sup>2</sup>
-  Density: 126 Units per Hectare
-  101 Units
-  Completed in 2023



# Waterfall Luxury House

The design was mainly orientated around a family lifestyle and having ample entertainment space while also conforming to the estate guidelines.

-  Architectural Style: Modern
-  WaterFall Estate, Midrand
-  Site Area: 1 157m<sup>2</sup>
-  On Site
-  1 House
-  Completed in 2023





# The Aura

The steel elements act as an architectural element that cloaks the simplicity and uniformity of the building design by creating depth on what is otherwise a flat facade.

- Architectural Style: Modern Contemporary
- Northgate, Randburg
- Site Area: 44 979m<sup>2</sup>
- Density : 93 Units per Hectare
- 356 Units
- Completed in 2022



# East on 82

The brief from the client was to deliver a product that showed design innovation and would have minimal maintenance over the life cycle of the building.

- Architectural Style: Modern Contemporary
- Alveda Park, Johannesburg
- Site Area: 53 139m<sup>2</sup>
- Density : 116 Units per Hectare
- 615 Units
- Completed in 2022





# Crowthorne Corner

The brief was to design a luxury rental development that included the outdoor lifestyles one would find in a traditional residential estate. The clubhouse overlook the recreational open space.

-  Architectural Style: Modern Contemporary
-  Crowthorne, Midrand
-  Site Area: 30 951m<sup>2</sup>
-  Density : 30 Units per Hectare
-  150 Units
-  Completed in 2022



# Lombardy Meander

This secure Contemporary residential development in Pretoria East is designed to maximise views to the north and north-east.

-  Architectural Style: Contemporary Farm Style
-  Lombardy, Pretoria East
-  Site Area: 31 166m<sup>2</sup>
-  Density : 100 Units per Hectare
-  314 Units
-  Completed in 2021





# Canvas 82

The colour used on the steel elements are intentionally darker than the bulk of the facade. In doing so, it creates a hierarchy of language on the facade.

- Architectural Style: Modern Contemporary
- Noordhang, Randburg
- Site Area: 24 771m<sup>2</sup>
- Density : 84 Units per Hectare
- 200 Units
- Completed in 2020



# Orchid Ridge

What sets this development apart from other developments is the integration of the existing wetland, which allows the integration of stormwater while keeping the integrity of the wetland.

- Architectural Style: Modern Contemporary
- Orchid Ridge, Randburg
- Site Area: 35 127m<sup>2</sup>
- Density : 110 Units per Hectare
- 312 Units
- Completed in 2020



innovative . architectural . design



hub  
ARCHITECTS

innovative . architectural . design



# Midview Gardens

An exciting contemporary development in Randburg designed to create an innovative concept that can be used for future projects of this kind.

-  Architectural Style: Modern Contemporary
-  Noordwyk, Midrand
-  Site Area: 12 880m<sup>2</sup>
-  Density: 100 Units per Hectare
-  128 Units
-  Completed in 2018



innovative . architectural . design

# Sparks School

Private school built as part of the Carlswald development. The walls are a combination of face brick and plaster painted grey and are detailed with Balau timber screens.

-  Architectural Style: Modern Contemporary
-  Carlswald, Midrand, Johannesburg
-  Site Area: 20 804m<sup>2</sup>
-  Number of Pupils: 1 000
-  Completed in 2017



innovative . architectural . design



# The Parks

Two and three Storey Modern Farm style apartments with dark grey steel roofs and aluminium window frames. The walls are plastered and painted with some face brick detailing.

-  Architectural Style: Modern Farm Style
-  Monument Road, Kempton Park
-  Site Area: 16 323m<sup>2</sup>
-  Density: 60 Units per Hectare
-  87 Units
-  Completed in 2017



# The Oval Luxury Apartments

Three & four storey apartment buildings. Walls are a combination of painted plaster and face brick. Dark grey portal frames on the gable ends are combined with Balau timber screens.

-  Architectural Style: Modern Contemporary
-  Pretoria East
-  Site Area: 47 549m<sup>2</sup>
-  Density: 40 Units per Hectare
-  190 Units
-  Completed in 2017





# Carlswald Luxury Apartments

Dark grey portal frames with Balau infill are features in these three storey apartment blocks. Indigenous landscaping complements this development.

-  Architectural Style: Modern Contemporary
-  Tambotie Road, Midrand, Johannesburg
-  Site Area: 84 164m<sup>2</sup>
-  Density : 50 Units per Hectare
-  450 Units
-  Completed in 2016



# Umthunzi Gardens Apartments

Double storey apartments with plastered and painted walls. The face brick stairwells are detailed with open trusses and stone cladding.

-  Architectural Style: Modern Contemporary
-  Broadacres, Fourways, Johannesburg
-  Site Area: 23 076m<sup>2</sup>
-  Density : 30 Units per Hectare
-  69 Units
-  Completed in 2016



hub  
ARCHITECTS



innovative . architectural . design



hub  
ARCHITECTS

innovative . architectural . design



# Birchwood Village

Modern Farmhouse style three storey apartment blocks with grey steel roofs and balustrades. Walls are plastered and painted and arches are used as detailing to balconies.

-  Architectural Style: Modern Mediterranean
-  Chartwell, Fourways, Johannesburg
-  Site Area: 34 261m<sup>2</sup>
-  Density: 70 Units per Hectare
-  180 Units
-  Completed in 2016



# Elawini Lifestyle Estate

Double and single storey residential development in Nelspruit. Grey concrete tiled roofs have open truss details on some units. Walls are plastered and painted with Face brick plinths and chimneys.

-  Architectural Style: Modern Farm Style
-  Nelspruit
-  Site Area: 20 642m<sup>2</sup>
-  Density: 50 Units per Hectare
-  82 Units
-  Completed in 2014





# Ports Edge Conversion

This residential development is situated in the beautiful Waterfront. Wooden floors and stylish finishes complement the large windows that have views of the Waterfront and Table Mountain.

-  Architectural Style: Modern
-  Victoria & Alfred Waterfront, Centre, Cape Town
-  Building Area: 6 385m<sup>2</sup>
-  Density : 150 Units per Hectare
-  109 Residential Apartments
-  Completed in 2014



# The View Apartments

This development combines mono-pitched and double-pitched tiled roofs with roof terraces. The sculptural interior staircases lead to mezzanine level.

-  Architectural Style: Modern Contemporary
-  Fourways, Johannesburg
-  Site Area: 54 344m<sup>2</sup>
-  Density : 70 Units per Hectare
-  380 Units
-  Completed in 2012





# Zaleni Apartments

Two and three storey thatched roof, Lodge Style apartments with gum pole detailing. Walls are plastered and painted in earthy colours and indigenous landscaping completes the development.

-  Architectural Style: Lodge Style
-  Pine slopes, Sandton
-  Site Area: 9 888m<sup>2</sup>
-  Density: 90 Units per Hectare
-  89 Units
-  Completed in 2007



# 17 on Forest

Curved Post-Modern walls are combined with pergolas and open trusses in this development. Rock cladding on some walls are complemented by water features and indigenous landscaping.

-  Architectural Style: Urban Contemporary
-  Forest Lane, Lone Hill, Johannesburg
-  Site Area: 12 900m<sup>2</sup>
-  Density: 70 Units per Hectare
-  90 Units
-  Completed in 2007



hub  
ARCHITECTS



innovative . architectural . design



hub  
ARCHITECTS

innovative . architectural . design



# Stonewood Estate

White roofs with putty coloured painted and plastered walls are detailed with white balustrading and country style landscaping.

-  Architectural Style: Modern Country
-  Macbeth Road, Fourways, Johannesburg
-  Site Area: 13 500m<sup>2</sup>
-  Density: 50 Units per Hectare
-  76 Apartments
-  Completed in 2006



# Sibiti Private Estate

Modern thatched single and double storey apartments. Gumpole detailing is combined with rock cladding and indigenous landscaping.

-  Architectural Style: Modern Thatch
-  Nerine Road, Witkoppen, Johannesburg
-  Site Area: 21 500m<sup>2</sup>
-  Density: 70 Units per Hectare
-  151 Units
-  Completed in 2006



hub  
ARCHITECTS

hub  
ARCHITECTS



# 21 Zambezi Estate

This thatched development consists of four storey blocks. The top storey uses the pitched roof space. The walls are plastered and have face brick detailing to the bay windows and columns.

-  Architectural Style: Modern Thatch
-  Zambezi, Pretoria
-  Site Area: 42 857m<sup>2</sup>
-  Density : 70 Units per Hectare
-  300 Units
-  Completed in 2006



# Lone Hill Village

The French Provincial style is enhanced with rock clad turrets, arched windows and terracotta tiled roofs. Timber pergolas and Formal landscaping complement the development.

-  Architectural Style: French Provincial
-  The Straight, Lone Hill, Johannesburg
-  Site Area: 44 857m<sup>2</sup>
-  Density : 70 Units per Hectare
-  314 Units
-  Completed in 2006





# Tinza Lifestyle Estate

Three storey apartments with steep concrete tiled roofs, plastered and painted walls and red face brick detailing. The mezzanine levels have triangular windows and covered roof terraces.

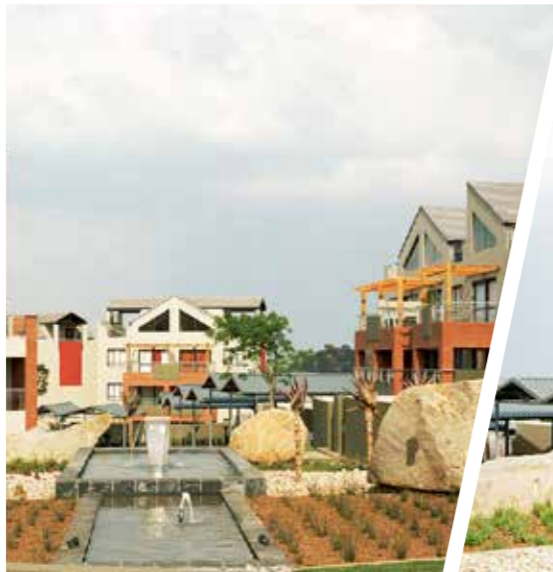
-  Architectural Style: 'New Age' Contemporary
-  The Straight, Lone Hill, Johannesburg
-  Site Area: 45 000m<sup>2</sup>
-  Density: 70 Units per Hectare
-  302 Units
-  Completed in 2006



# The Crest Apartments

A combination of mono-pitch and double-pitched roofs characterise this development. Architectural features include rock cladding on garden walls and triangular windows in gable ends.

-  Architectural Style: Modern Contemporary
-  Sunninghill, Johannesburg
-  Site Area: 25 850m<sup>2</sup>
-  Density: 70 Units per Hectare
-  177 Units
-  Completed in 2005



hub  
ARCHITECTS

hub  
ARCHITECTS





## Under Construction



- Emerald Skye
- Zambezi Heights
- Royal Residence
- Basalt



# Emerald Skye

This high-density, six-storey, luxury residential apartment building has been designed to maximise the views to the North, South and West of the site.

-  Architectural Style: Modern Contemporary
-  Greenstone, Johannesburg
-  Site Area: 30 225m<sup>2</sup>
-  Density : 120 Units per Hectare
-  330 Units
-  On Site



# Zambezi Heights

The brief from the client was to deliver a product that showed design innovation that would have minimal maintenance over the life cycle of the building while focusing on the affordable market.

-  Architectural Style: Modern Contemporary
-  Derdepoort, Pretoria
-  Site Area: 41 421m<sup>2</sup>
-  Density : 100 Units per Hectare
-  414 Units
-  On Site





# Royal Residence

This site layout is designed with nature preservation in mind. The site contains 3 green parks. This was done to keep the existing established trees and create ample green space with mature vegetation.

-  Architectural Style: Modern Contemporary
-  Boksburg
-  Site Area: 30 859m<sup>2</sup>
-  Density: 78 Units per Hectare
-  240 Units
-  On Site



# Basalt

The development is built on a brownsite while also incorporating renewable energy. The units are designed for the luxury home buyer with north facing living spaces and private gardens.

-  Architectural Style: Modern
-  Wilton Rd, Bryanston
-  Site Area: 11 053m<sup>2</sup>
-  Density: 45 Units per Hectare
-  50 Units
-  On Site







## Master Planning

- Lusundvu Master Plan
- Siyalu Estate Master Plan
- The Hills Proper Luxury Apartments
- The Hills Lifestyle Estate Apartments
- Monavoni Lifestyle Estate
- Celebrations



# Lusundvu Master Plan

The brief was to design a small town in the rural area of Eswatini. The development will incorporate a working farm that borders on the river running through the site with a green corridor connection.

-  Eswatini
-  Site Area: 81 1260m<sup>2</sup>
-  280 ERF's/ Stands

## Zoning:

- Residential (sectional & full title)
- Educational,
- Recreational
- Industrial
- Commercial which includes retail
- Hospitality
- Municipal services
- Agriculture



hub  
ARCHITECTS

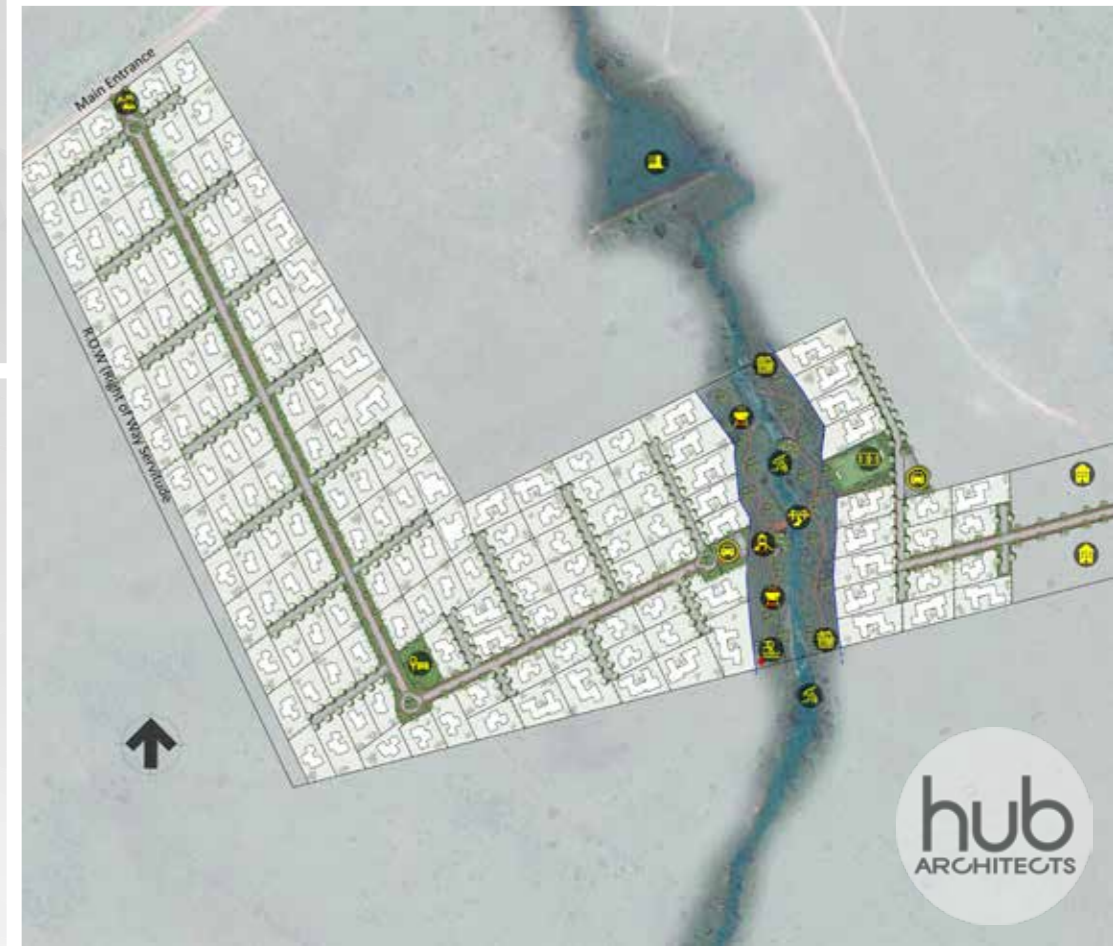
# Siyalu Estate Master Plan

The brief was to design a new residential estate in Manzini close to the airport. The river that flows through the site created a opportunity to allocate ample green recreational space with amenities.

-  Eswatini
-  Site Area: 20 4462 m<sup>2</sup>
-  168 ERF's/ Stands

## Zoning:

- Residential full title
- Residential sectional title
- Recreational space
- Municipal services



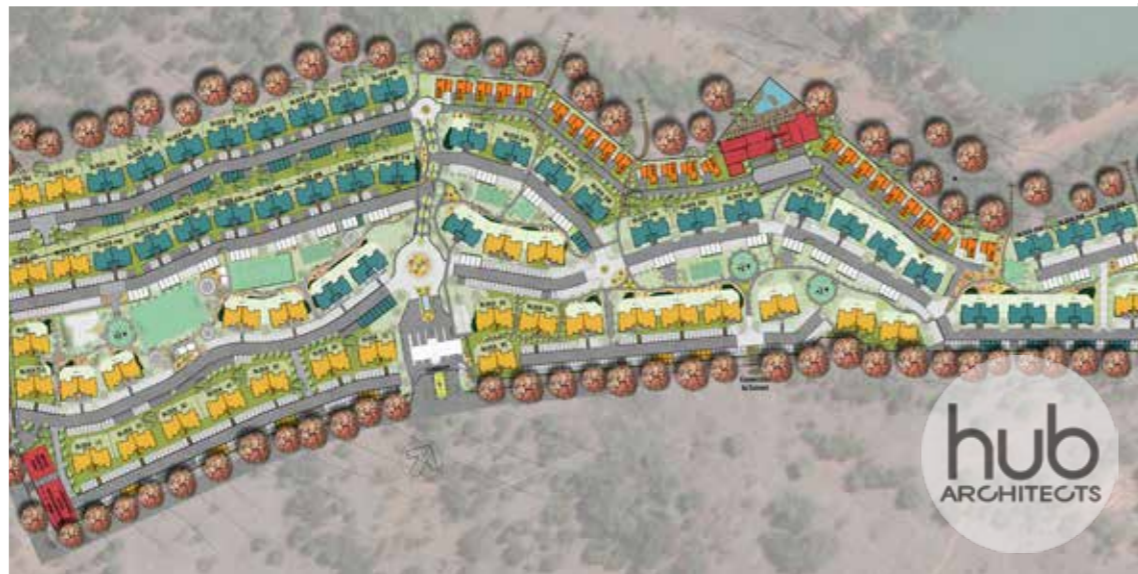
hub  
ARCHITECTS



# The Hills Proper Luxury Apartments

The development is connected by a sequence of open parks and child-friendly activities which are all connected by paved walkways.

-  Architectural Style: Modern Contemporary
-  Pretoria East
-  Site Area: 91 233 m<sup>2</sup>
-  Density: 45 Units per Hectare
-  407 Units



# The Hills Lifestyle Estate Apartments

Luxurious apartments located in a secure residential wildlife estate. Orientated around the views of the game reserve and located next to a dam where the wildlife converges on a regular basis.

-  Architectural Style: Modern Contemporary
-  Pretoria East
-  Site Area: 10 720m<sup>2</sup>
-  Density: 42 Units per Hectare
-  42 Units



innovative . architectural . design



innovative . architectural . design



# Monavoni Lifestyle Estate

The development is designed with separate ERF's that can be sold to be developed individually or can be developed as a single scheme. It has a green network that connects the various ERF's

-  Architectural Style: Contemporary Farm Style
-  Monavoni, Centurion
-  Site Area: 67 557 m<sup>2</sup>
-  Density: 80 Units per Hectare
-  540 Units



# Celebrations

The development is designed around green open space that connects the various developments to each other while creating an outdoor lifestyle in the dense urban fabric it's situated in.

-  Architectural Style: Modern Contemporary
-  Celebrations, Randburg
-  Site Area: 111 891m<sup>2</sup>
-  Density: 79 Units per Hectare
-  882 Units







## Design Concepts

- Kolonnade
- Sandown
- Highland Gate
- Ravenswood
- Melrose
- Blue Hills Apartments
- Blue Hills Self Storage
- Sandton Residential
- Broadacres
- Muswell Drive
- Rosebank
- Casa de Paraiso
- Barbeque Downs
- Centurion Towers
- Homes Haven
- Morningside Luxury House
- Heritage City
- Medina Luxury Resort



# Kolonnade

The development is designed to minimize maintenance while keeping with a modern aesthetic. The plaster bands and masonry details are used to emphasize the facades while creating private patios.

-  Architectural Style: Modern Contemporary
-  Montana, Tshwane
-  Site Area: 42 847m<sup>2</sup>
-  Density: 75 Units per Hectare
-  320 Units



# Sandown

The brief was to design a modern upmarket development where the preferred type of unit to be used are duplex homes. Each unit has their own garden and private garage.

-  Architectural Style: Modern Contemporary
-  Sandown, Sandton
-  Site Area: 6 413m<sup>2</sup>
-  Density: 48 Units per Hectare
-  30 Units





# Highland Gate



The brief was to design a luxury afriology spa, accompanied with a series of holiday homes in the Golf estate for rental holiday market. The units overlook the valley and extensive golf course.

-  Architectural Style: Modern Contemporary
-  Highland Gate, Dullstroom
-  Multiple erf's
-  Density: 1 Units per stand
-  12 Units



# Ravenswood

This development was designed and developed to utilize concrete shuttering systems to create the building structure. This system was chosen as it decreases construction time and labor required

-  Architectural Style: Modern
-  Ravenswood, Boksburg
-  Site Area: 11 136m<sup>2</sup>
-  Density: 89 Units per Hectare
-  99 Units





# Melrose

This development is situated in the Rosebank commercial node. The development utilizes a roof garden with an outdoor gym area and clubhouse to create recreational space for the residents.

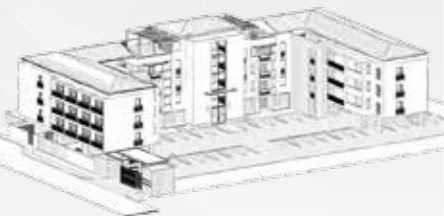
-  Architectural Style: Modern Traditional
-  Melrose, Johannesburg
-  Site Area: 2 974m<sup>2</sup>
-  Density: 208 Units per Ha
-  62 Units



# Blue Hills Apartments

The brief from the client was to create an aesthetically pleasing building that will be constructed only from off-shutter concrete construction and works with the constraints associated with it.

-  Architectural Style: Modern
-  Blue Hills, Midrand
-  Site Area: 30 896m<sup>2</sup>
-  Density: 90 Units per Hectare
-  277 Units





# Blue Hills Self Storage

The brief from the client was to design a storage facility that showed innovation in using storage containers while also creating an aesthetically pleasing building.

-  Architectural Style: Modern Contemporary
-  Blue Hills, Midrand
-  Site Area: 14 017m<sup>2</sup>
-  Density: n/a
-  115 Storage Units



# Sandton Residential

The client wanted to convert an existing office complex into an upmarket residential development that will incorporate the lifestyle and green spaces usually found on the outskirts of Sandton.

-  Architectural Style: Modern Contemporary
-  Sandton
-  Site Area: 31 260 m<sup>2</sup>
-  Density: 87 Units per Hectare
-  270 Units





# Broadacres

A semi-detached and stand alone housing scheme that is designed around modern lifestyle living. The development is designed with a modern aesthetic in mind. A central green park Featured area.

-  Architectural Style: Modern
-  Broadacres, Sandton
-  Site Area: 43 200m<sup>2</sup>
-  Density: 25 Units per Hectare
-  108 Units



# Muswell Drive

A stepped design results in large open terraces/roof gardens to some apartments. Mono-pitch roofs are combined with elegant detailing in plaster and Marmoran with glass balustrades.

-  Architectural Style: Modern Contemporary
-  Bryanston, Johannesburg
-  Site Area: 21 060m<sup>2</sup>
-  Density: 160 Units per Hectare
-  150 Units



innovative . architectural . design



hub  
ARCHITECTS

innovative . architectural . design



# Rosebank

This high-density development is designed to allow for parking below the building while maximising the density on site while allowing ample space between the building for northern sun penetration.

-  Architectural Style: Modern Contemporary
-  Rosebank
-  Site Area: 15 769m<sup>2</sup>
-  Density: 140 Units per Hectare
-  219 Units



# Casa de Paraiso

The interiors include architectural features such as open plan bathrooms and double volume private areas with mezzanine levels that lead onto roof terraces.

-  Architectural Style: Modern Contemporary
-  Maputo, Mozambique
-  Site Area: 30 817m<sup>2</sup>
-  Density: 70 Units per Hectare
-  210 Units





# Barbeque Downs

The finishes are a combination of face brick and painted plaster with NuTech board cladding on the gable ends. The architecture relies on the building form to give it presence on the site.

-  Architectural Style: Modern Contemporary
-  Kyalami, Midrand
-  Site Area: 10 220m<sup>2</sup>
-  Density: 88 Units per Hectare
-  88 Units



innovative . architectural . design

# Centurion Towers

High density residential apartment towers. The parking is at street level and the roof terrace above are used as communal open space that accommodate swimming pools and tennis courts.

-  Architectural Style: Modern Contemporary
-  Centurion, Pretoria
-  Site Area: 19 444m<sup>2</sup>
-  Density: 180 Units per Hectare
-  350 Units



innovative . architectural . design

hub  
ARCHITECTS

hub  
ARCHITECTS



# Homes Haven

There are two types of units in this development. Type 1 has an upper mezzanine level leading onto a balcony on the roof. Type 2 has a more traditional hipped roof.

 Architectural Style: Modern Rustic

 Mogale City

 Site Area: Undefined

 Undefined

 Units Undefined



# Morningside Luxury House

Ultra modern single dwelling. Clean concrete lines with large aluminium windows are combined to create an elegant and sophisticated home.

 Architectural Style: Ultra Modern

 Sandton, Gauteng

 Site Area: 9 000m<sup>2</sup>

 Density: 35 Units per Hectare

 31 Units





# Heritage City

A modern high rise Residential and Commercial mixed-use building. The steel frame and glass facade are in a twisted form.




-  Architectural Style: Modern
-  Gauteng
-  Site Area: Unrestricted
-  Density: Unrestricted
-  Unrestricted Units



innovative . architectural . design

# Medina Luxury Resort

This luxury residential resort is situated on the banks of the Vaal river. The ribbon-type design facilitates river views from all the apartments. Timber boardwalks lead to the river and along the river edge.

-  Architectural Style: Modern Contemporary
-  Vaal River, Gauteng
-  Site Area: 100 000m<sup>2</sup>
-  Limited Density Allowed
-  50 Units



innovative . architectural . design

hub  
ARCHITECTS





## Design Concepts

- Riverside Apartments
- Sunningdale Residential
- Castle Gate Residential



# Riverside Apartments

The brief is to develop a social housing scheme where the development will be designed around community. Interconnecting green corridors have been created to form a pedestrian network.

-  Architectural Style: Modern Contemporary
-  Riversands, Midrand
-  Site Area: 97 101m<sup>2</sup>
-  Density: 160 Units per Hectare
-  1 573 Units



# Sunningdale Residential

The development is aimed at bringing affordable rentable units to the linksfield area. The development is designed to create a central recreational space with supporting functions.

-  Architectural Style: Modern Contemporary
-  Linksfield, Johannesburg
-  Site Area: 81 482m<sup>2</sup>
-  Density: 160 Units per Hectare
-  1 312 Units





# Castle Gate Residential

The brief was to design and develop the residential portion of the Castle gate node. The development would consist of apartments and a retirement village with ample green recreational space.

-  Architectural Style: Modern Contemporary
-  Castle Gate, Tshwane
-  Site Area: 20 8127m<sup>2</sup>
-  Density: 68 Units per Hectare
-  1 414 Units







Shop 21 Illiondale Centre,  
7 Owen Road, Illiondale,  
Edenvale, 1609,  
Johannesburg,  
South Africa

E: [jo@hubdesign.co.za](mailto:jo@hubdesign.co.za)  
T: +27 (0)11 822 2725  
W: [www.hubarchitects.co.za](http://www.hubarchitects.co.za)

