



design beyond imagination



2025/2026

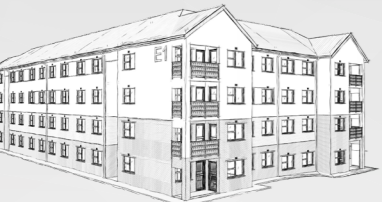


Design Concepts

- Riverside Apartments
- Sunningdale Residential
- Castle Gate Residential
- Hillcrest Residential
- Salt River Apartments

Riverside Apartments

The design of the social housing scheme revolves around fostering a sense of community by prioritizing interconnected green corridors that serve as vibrant pedestrian pathways. These corridors act as the backbone of the development, linking residential blocks with communal spaces, gardens, and local amenities, promoting interaction and a shared sense of belonging. The layout emphasizes walkability and sustainability, with lush greenery enhancing both the aesthetic quality and the social fabric of the neighborhood.



-  Architectural Style: Modern Contemporary
-  Riversands, Midrand
-  Site Area: 97 101m²
-  Density: 160 Units per Hectare
-  1 573 Units

design beyond imagination

Sunningdale Residential

The development is focused on providing affordable rental units to meet the growing demand in the Linksfield area, offering a valuable solution for residents. Central to the design is spacious recreational area, creating a vibrant community hub where residents can gather, relax, and engage in various activities. Supporting functions such as retail spaces, cafes, and communal amenities are strategically placed around this central space, enhancing the overall liveability and fostering a strong sense of community.



-  Architectural Style: Modern Contemporary
-  Linksfield, Johannesburg
-  Site Area: 81 482m²
-  Density: 160 Units per Hectare
-  1 312 Units

design beyond imagination

Castle Gate Residential

The residential portion of the Castle Gate node is envisioned as a harmonious blend of modern living and tranquil green spaces, featuring a mix of contemporary apartments and a serene retirement village. The design prioritizes open, expansive green areas, promoting social interaction, relaxation, and wellness, while ensuring accessibility for residents of all ages. A thoughtful integration of natural elements, pedestrian-friendly pathways, and sustainable building practices will create a vibrant community-oriented environment that fosters both connection and tranquillity.



-  Architectural Style: Modern Contemporary
-  Castle Gate, Tshwane
-  Site Area: 20 8127m²
-  Density: 68 Units per Hectare
-  1 414 Units

design beyond imagination



Hillcrest residential

The architectural design of this social housing development in Hillcrest, Mthatha, is centered around creating a cohesive sense of community through the strategic use of interconnected green corridors that serve as active pedestrian pathways. These corridors are the central organizing element of the layout, linking residential blocks to communal spaces, gardens, and essential amenities, fostering social interaction and a shared sense of belonging. The design prioritizes walkability and sustainability, with lush landscaping integrated throughout to enhance both the aesthetic appeal and the social vibrancy of the neighborhood. The careful balance of built form and green spaces promotes a sustainable, community-driven environment that encourages connectivity and well-being.



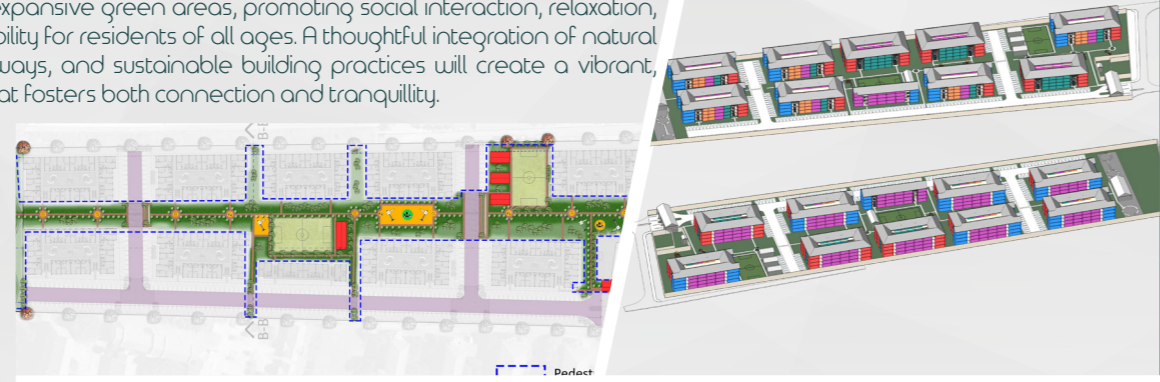
-  Architectural Style: Modern Contemporary
-  Hillcrest, Mthatha
-  Site Area: 22 3244m²
-  Density: 160 Units per Hectare
-  3520 Units

design beyond imagination



Salt river apartments

The residential portion of the Castle Gate node is envisioned as a harmonious blend of modern living and tranquil green spaces, featuring a mix of contemporary apartments and a serene retirement village. The design prioritizes open, expansive green areas, promoting social interaction, relaxation, and wellness, while ensuring accessibility for residents of all ages. A thoughtful integration of natural elements, pedestrian-friendly pathways, and sustainable building practices will create a vibrant, community-oriented environment that fosters both connection and tranquillity.



- Architectural Style: Modern Contemporary
- Salt river, Capetown
- Site Area: 34716 m²
- Density: 185 Units per Hectare
- 600 Units

design beyond imagination





Shop 21 Illiondale Centre,
7 Owen Road, Illiondale,
Edenvale, 1609,
Johannesburg,
South Africa

E: jo@hubsa.co.za
T: +27 (0)11 822 2725

